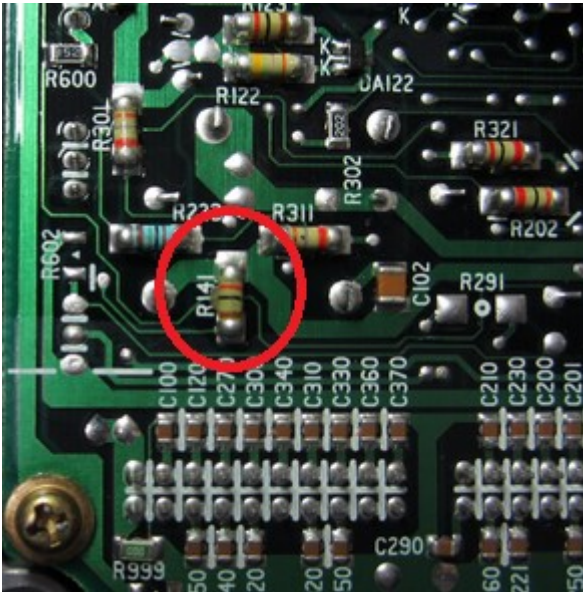


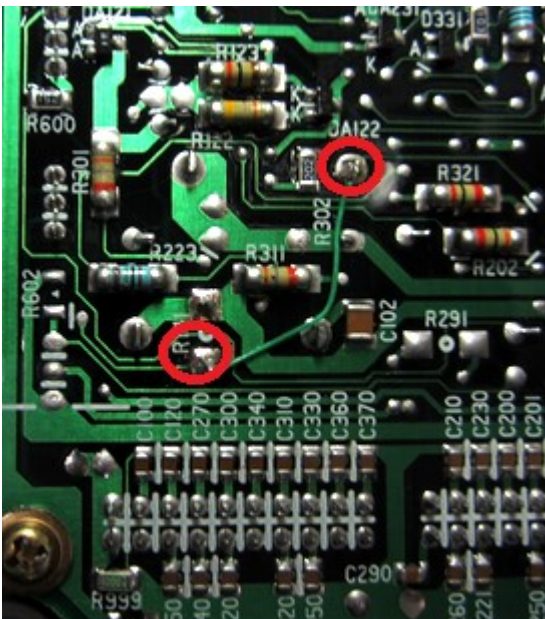
Nistune TB45 Conversion (using Infiniti M30 ECU)

1. Remove R141

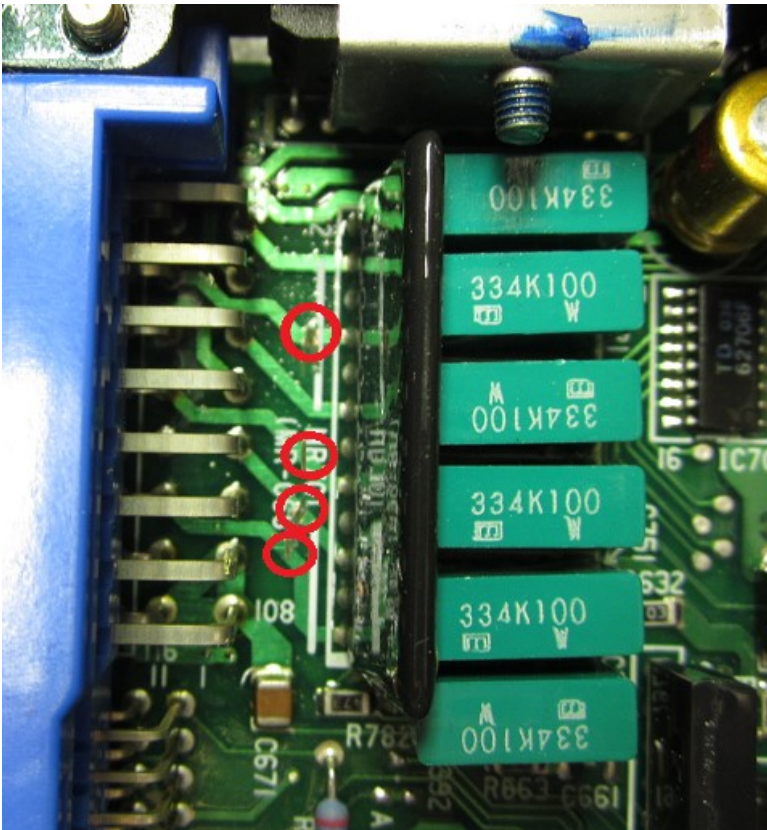
(Ignition switch input swap over pin 57 to pin 45)



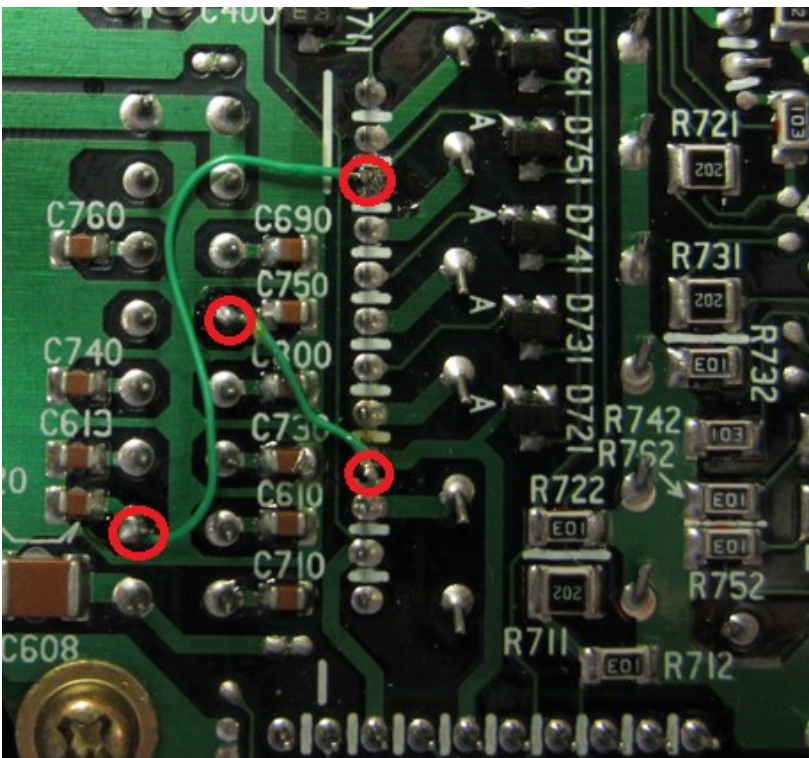
2. Add wire from bottom R141 to end of diode D102 (marked DA122 on bottom side)



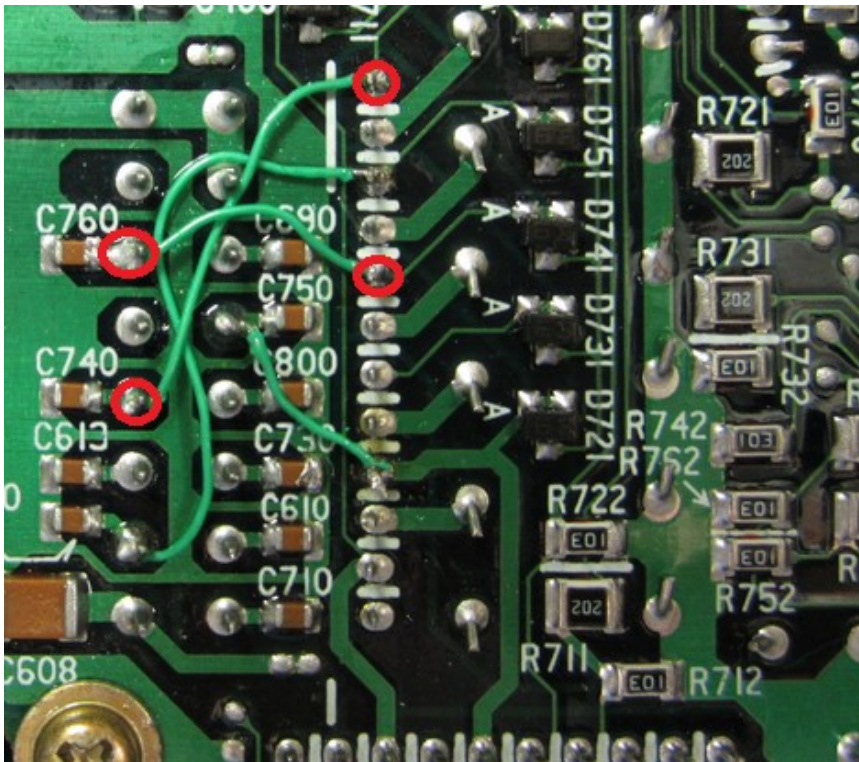
5. Cut four injector tracks on top side as marked
(Swapping injector 2 and 5, swapping injector 4 and 6)



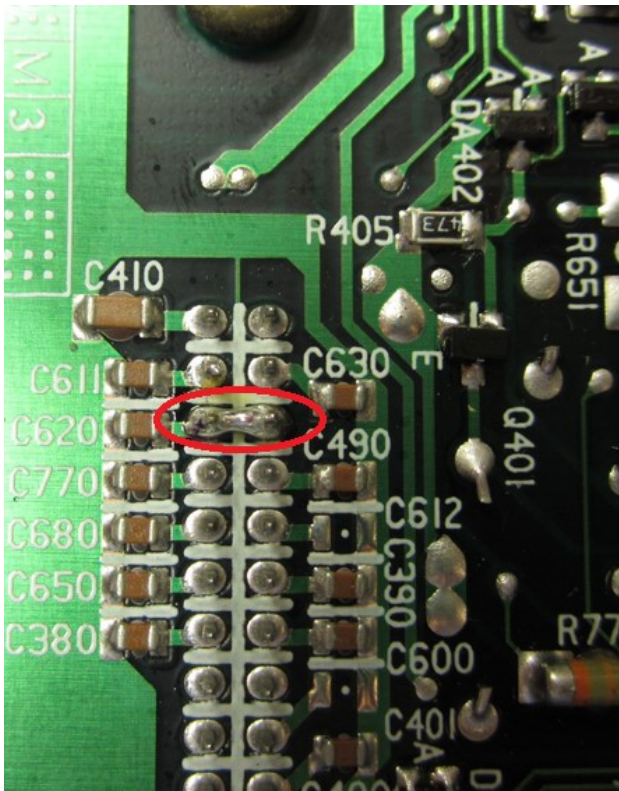
6. Join injector tracks as marked
Pin 110 to resistor pack pin 9
Pin 105 to resistor pack pin 3



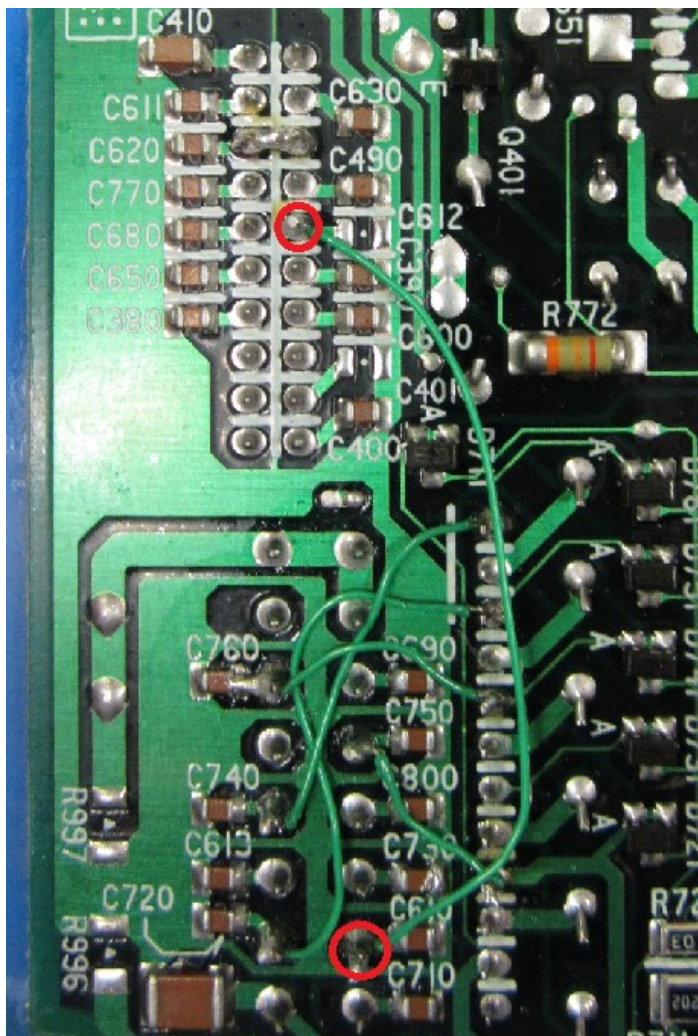
7. Join injector tracks as marked
Pin 112 to resistor pack 5
Pin 114 to resistor pack 1



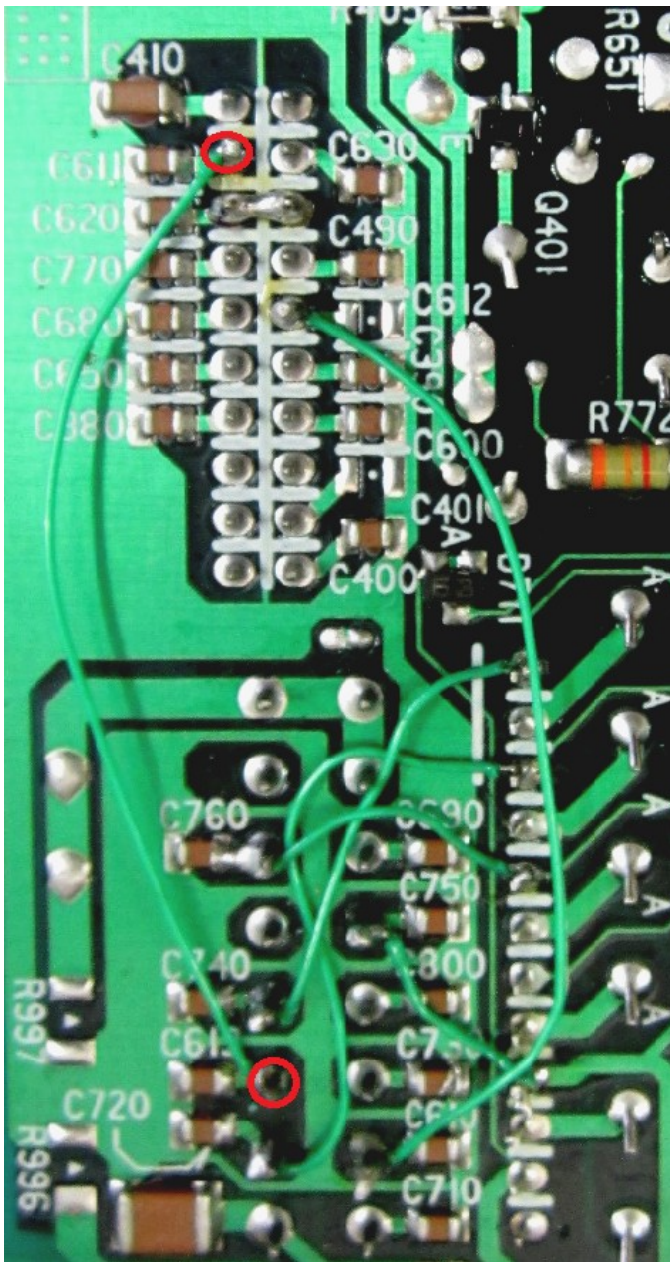
8. Join ECU pins 18 and 8
(Fuel pump NATS swapover)



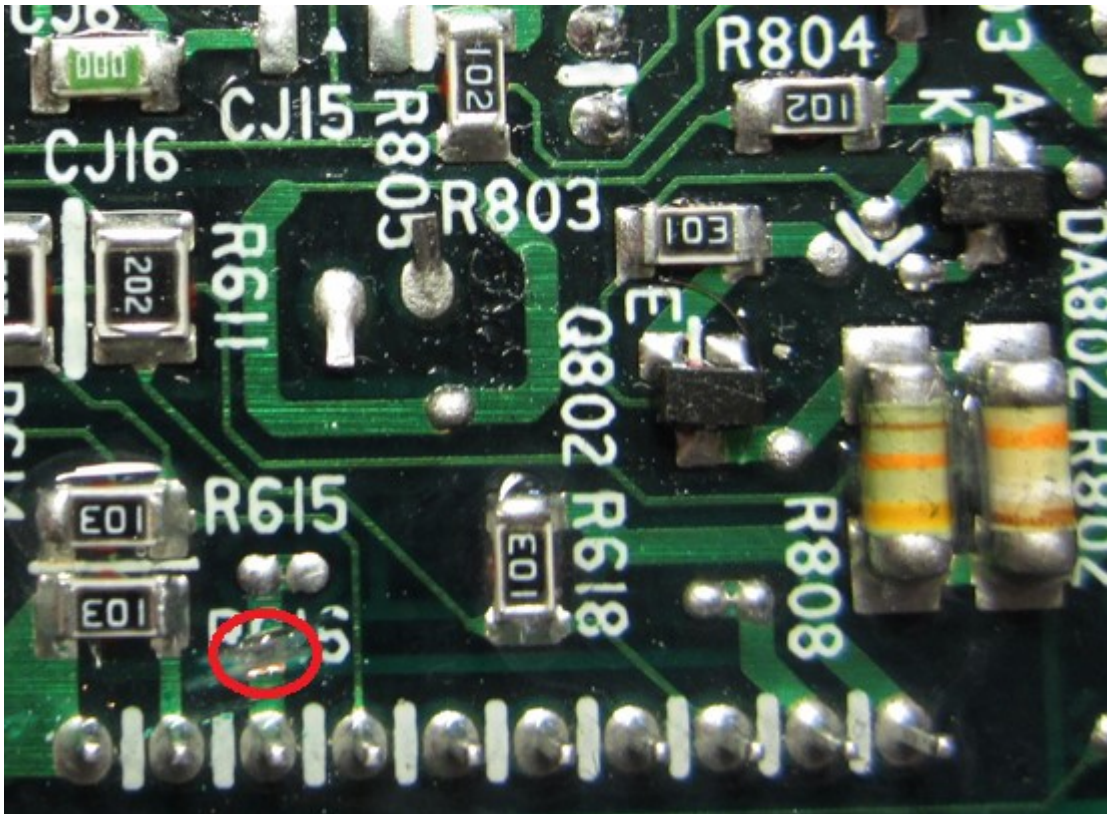
9. Join ECU pins 102 and 6
(EGR output to Control Fan 2)



10. Join ECU pins 111 and 19
(Pressure regulator solenoid to Control Fan 1)



11. Cut HF9907 driver pin 3 to air regulator



12. Pin 23 (knock sensor) 470K to ground